

Z-Filter

Environmental Solutions

Z300A Application Summary: Dairy Waste Activated Sludge

Trial Date:

February 2015.

Trial Location:

Stanhope, Victoria, Australia at a large multi-national dairy producer.

Z-Filter Feed Material:

Aerobically digested whey waste from the dairy production facility.

Coagulation & Flocculation:

No coagulation required prior to flocculation. Polymer use was approximately 0.25 litres of neat emulsion per cubic metre of sludge.

Feed Flow Rate:

Effluent was fed into the Z-Filter at a rate of approximately 20m³/h.

Feed Dry Solids Content:

4% to 8.7% dry solids.

Filter Cake Dry Solids Content:

28% dry solids with flocculation.

Filtrate Quality:

1.1% dry solids.

Appendix:

Site trial video can be viewed here:

<https://www.youtube.com/v/CjtgkyDBELE&autoplay=1>

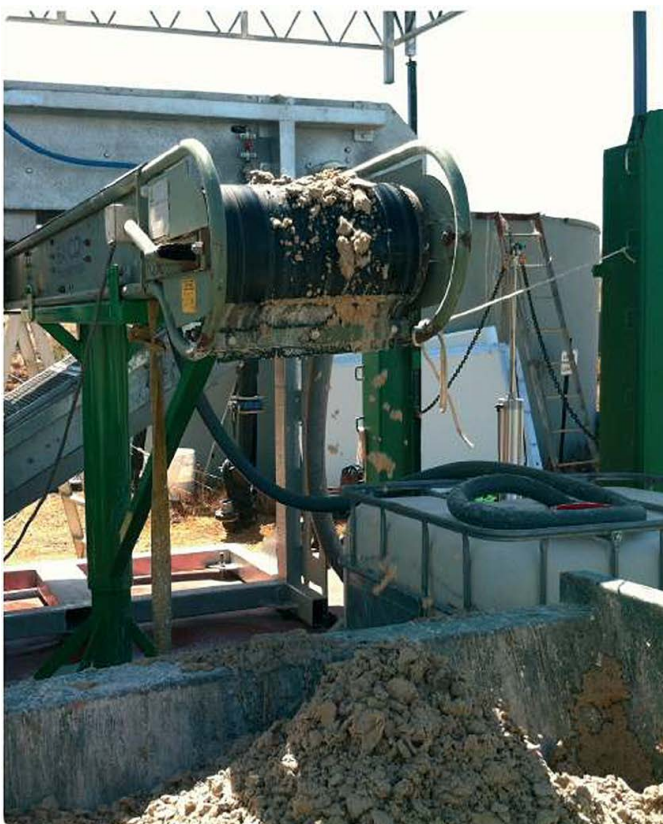


Fig 1. Solids from the Z-Filter discharged into a skip bin.



Fig 2. Filtrate being discharged from the Z300A unit.



Fig 3. Bulk de-watering section of the Z300A.